

# Food Waste

Always put food waste in the green biobags. When we have harvested the food waste for biogas, the residue will be used on the farmers' fields as natural fertiliser.



**Please close your  
green biobag with a  
tight knot**



**ROSKILDE  
KOMMUNE**





# Glass

Empty jars, glass containers and bottles - whole or broken. Lids and labels can be left on. We make sure these are discarded and recycled separately.

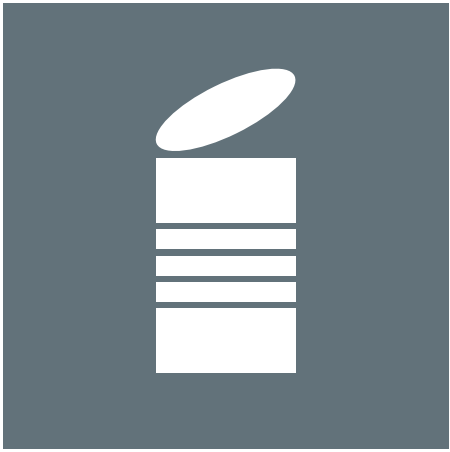


Glass does not need to be completely clean – but please make sure jars are empty



ROSKILDE  
KOMMUNE



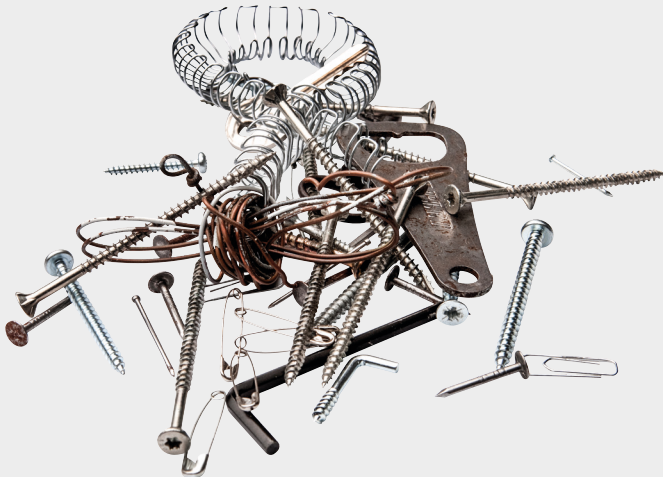


# Metal

Metal waste is valuable and easy to recycle - but must not contain electronics, oil or hazardous waste



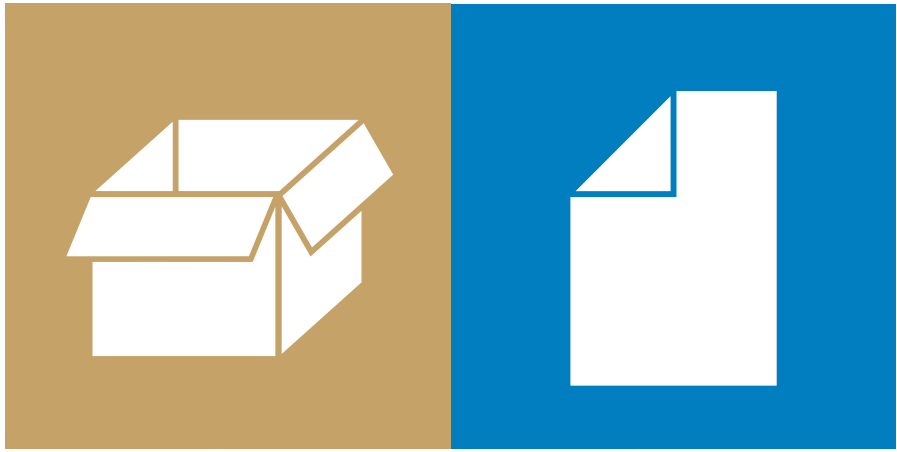
Just rinse dirty metal in cold water



ROSKILDE  
KOMMUNE

Read more about recycled metal's many uses at [roskilde.dk/metal](https://roskilde.dk/metal)





# Cardboard & Paper

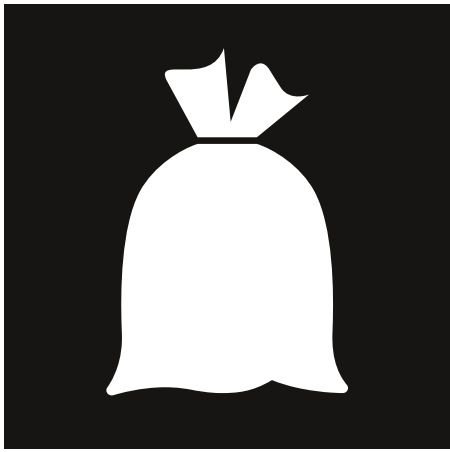
Cardboard and paper both go in the container.  
If it is clean and dry it can be recycled.

  
**Put cardboard and paper into your container loose - and not in a bag. Flatten and fold cardboard so it doesn't take up too much space.**



**ROSKILDE  
KOMMUNE**





# Residual Waste

Your residual waste is the leftover waste from your recycling. It is incinerated for the production of electricity and heat.

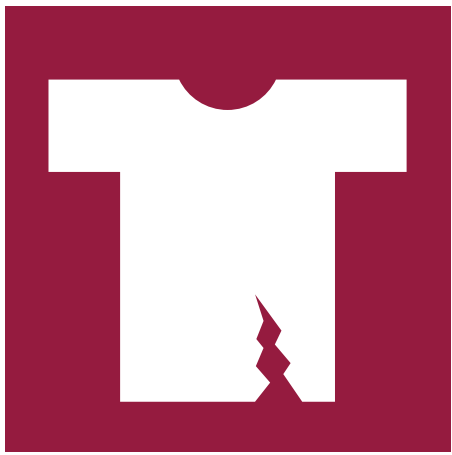


Please tie your bag with residual waste with a tight knot



ROSKILDE  
KOMMUNE



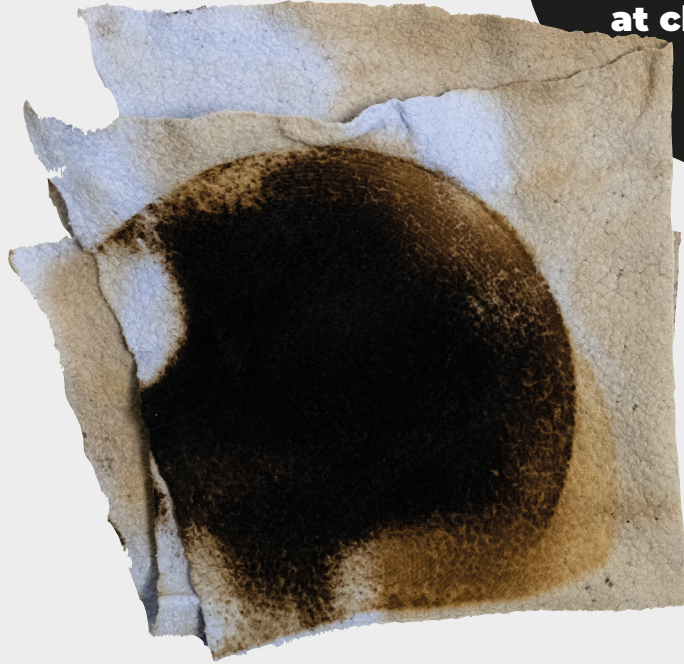


# Textile Waste

Do you have worn and outlived clothes and textiles?  
You can recycle them as long as they are clean and dry.



**Donate usable clothes  
and good textiles  
at charity deposit  
points**



**ROSKILDE  
KOMMUNE**

Find a list of thrift stores and deposit points at [roskilde.dk/tekstilaaffald](https://roskilde.dk/tekstilaaffald)





**Larger household appliances must be taken to the recycling station or put out for bulky waste collection**

**ROSKILDE KOMMUNE**

**ROSKILDE  
KOMMUNE**

Learn to spot your hazardous waste at [roskilde.dk/farligtaffald](https://roskilde.dk/farligtaffald)





# Plastics and Food and Beverage Cartons

Plastic and food and beverage cartons go into the same container - they will be separated at the sorting plant.

  
**Just put your plastics and food and beverage cartons directly into your container - not in a bag.**



**ROSKILDE  
KOMMUNE**

Read more about how we recycle your plastic and food and beverage cartons at [roskilde.dk/plastogkartoner](https://roskilde.dk/plastogkartoner)